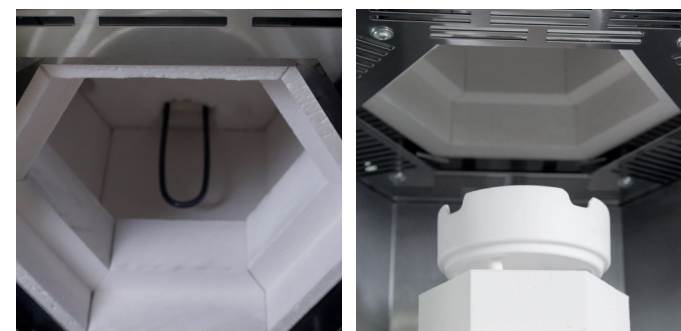
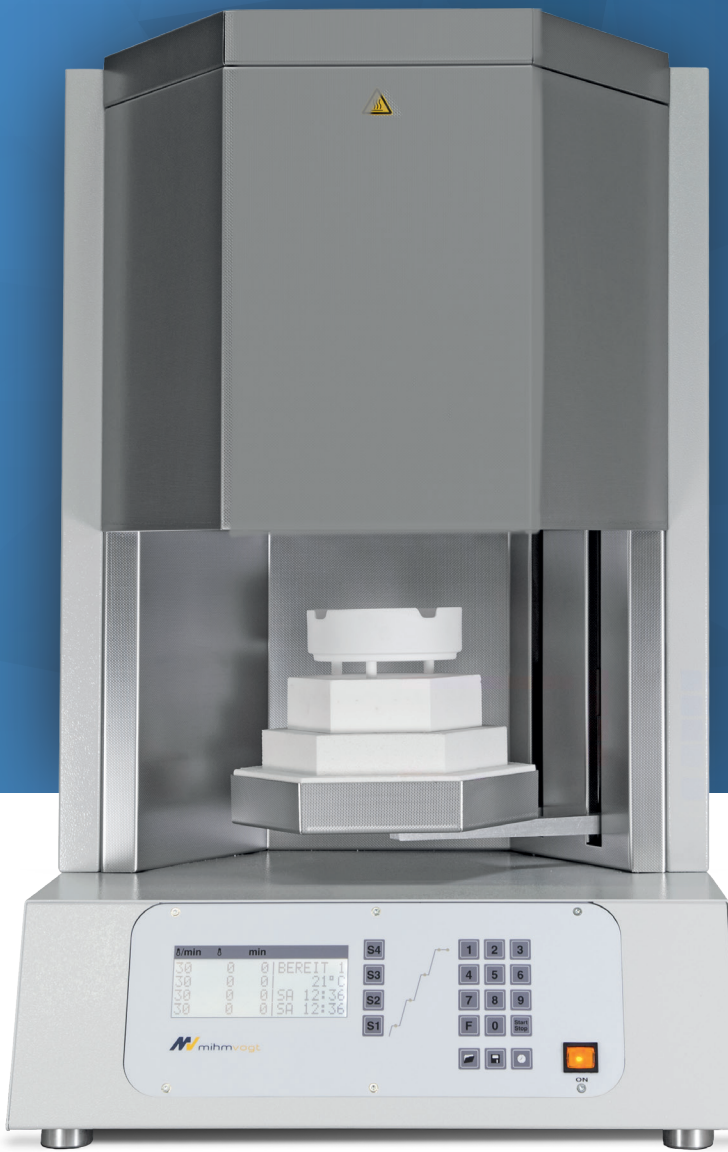


HT

CLASSIC

50-60 SINGLE CROWNS

- High-quality molybdenum-disilicide heating elements CLASSIC
- Maximum temperature 1650°C
- Heating-chamber volume 2x Ø 120/30 mm
- Program control
 - LCD-Display
 - 4 steps
 - 30 program numbers
- Thermocouple PtRh-Pt, type S
- Temperature accuracy at 1500°C +/- 3 °C
- Over-night programming
- Buffering of emergency-cooling battery



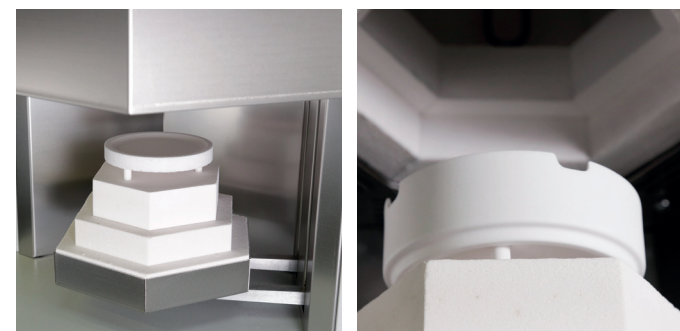
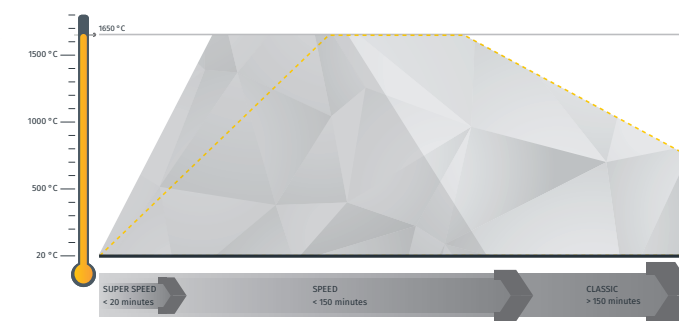
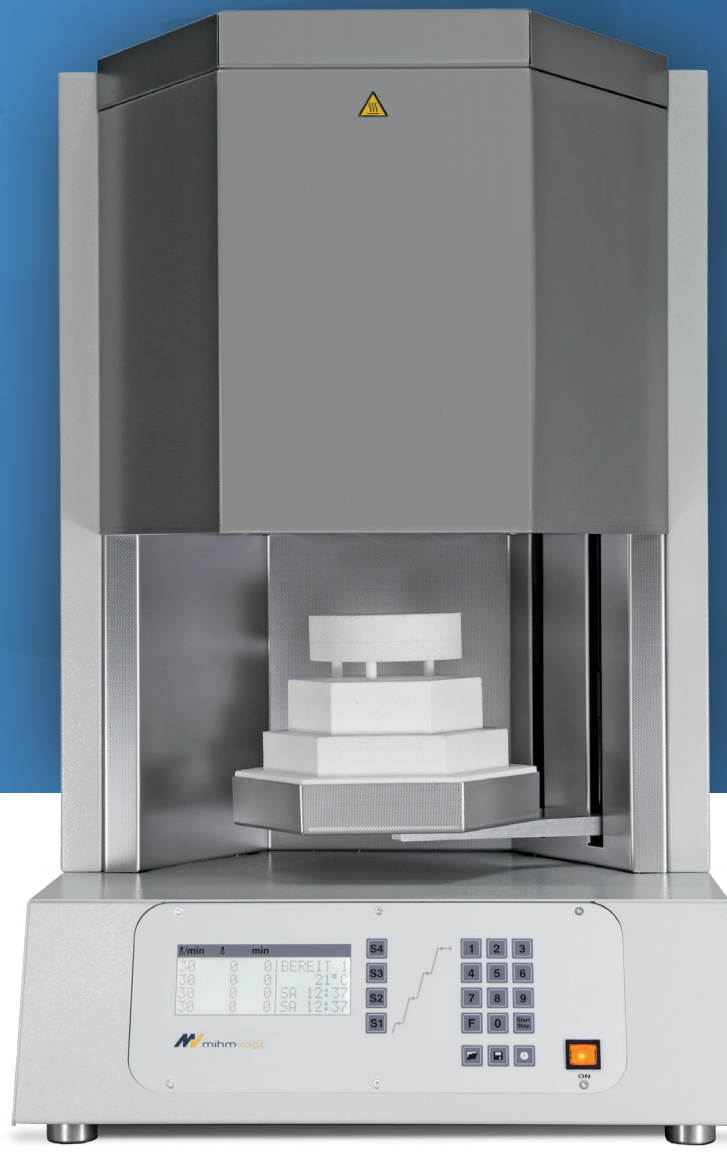
Technical Data	HT
Power max.	3100 W
Voltage range / frequency	200–240 V / 50–60 Hz
Weight	78 kg
Dimensions W/D/H	500/560/810 mm

HT SPEED

SPEED CLASSIC

50-60 SINGLE CROWNS

- High-quality molybdenum-disilicide heating elements SPEED
- Maximum temperature 1650°C
- Heating-chamber volume 2x Ø 120/30 mm
- Program control
 - LCD-Display
 - 4 steps
 - 30 program numbers
- Thermocouple PtRh-Pt, type S
- Temperature accuracy at 1500°C +/- 3 °C
- Over-night programming
- Buffering of emergency-cooling battery



Technical Data	HT SPEED
Power max.	3800 W
Voltage range / frequency	220–240 V / 50–60 Hz
Weight	78 kg
Dimensions W/D/H	500/560/810 mm

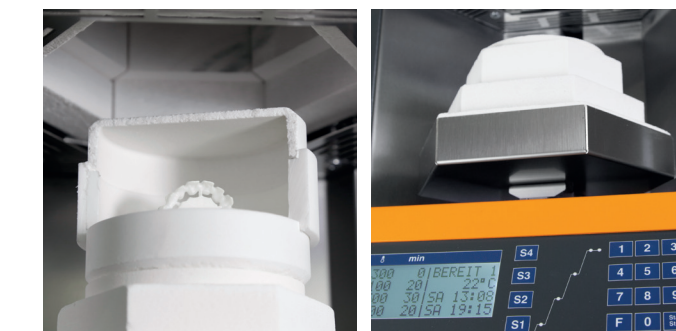
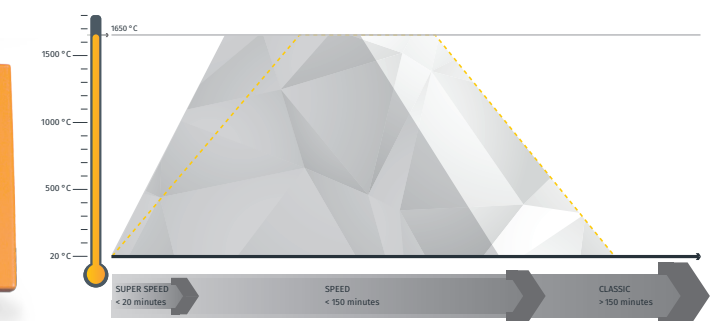
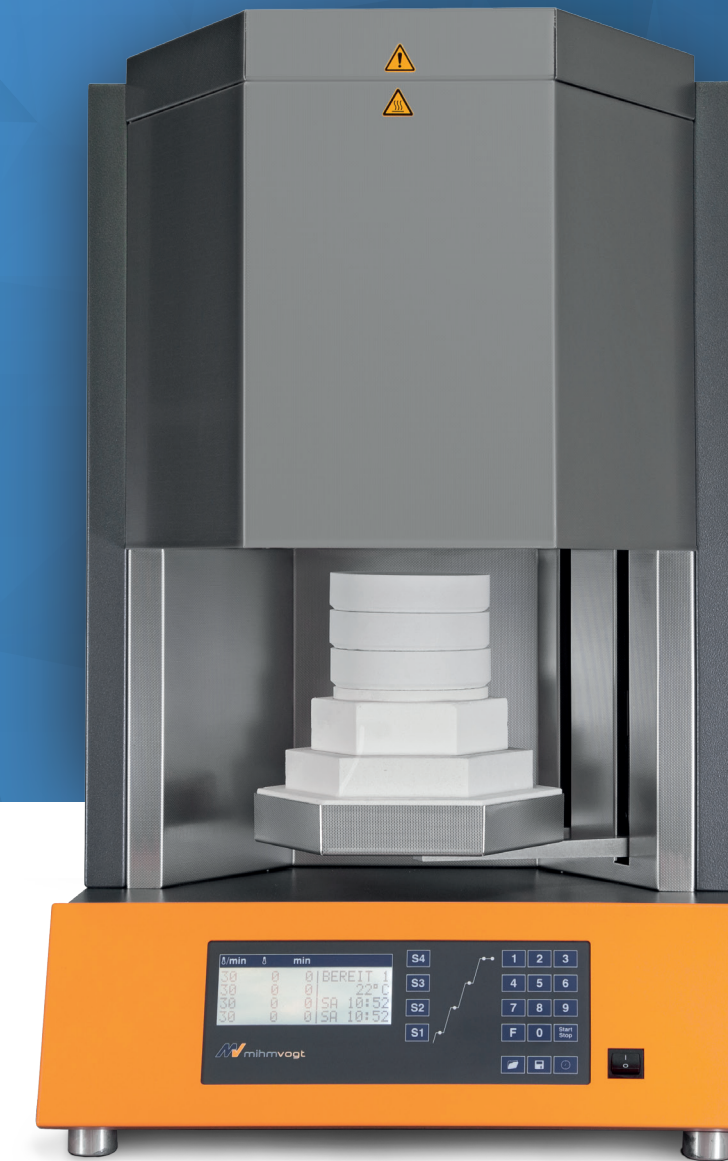
HT-2/M/ZIRKON-120

SPEED CLASSIC

75-90 SINGLE CROWNS

- High-quality molybdenum-disilicide heating elements PRO
- Maximum temperature 1650°C
- Heating-chamber volume 3x Ø 120/30 mm
- Program control
 - LCD-Display
 - 4 steps
 - 30 program numbers
- Service programs
 - A - Temperature control*
 - C - Purge heating chamber
 - E - Regenerate heating elements
- Thermocouple PtRh-Pt, type S
- Temperature accuracy at 1500°C +/- 3 °C
- Over-night programming

* only in conjunction with test-kit



Technical Data	HT-2/M/ZIRKON-120
Power max.	3800 W
Voltage range / frequency	200–240 V / 50–60 Hz
Weight	74 kg
Dimensions W/D/H	500/560/820 mm

Technical Data



Details standard not kompatibel

Technical informations		HT 9600	HT SPEED 9601	HT-2/M/ZIRKON-120 9650
Heating system				
Scope/system size		CLASSIC	SPEED CLASSIC	SPEED CLASSIC
Max. temperature	Tmax.	1650°C	1650°C	1650°C
Heating elements	type	MoSi	MoSi	MoSi
	number	6	6	6
Heating-chamber height	mm	77	77	102
Sintering tray				
Process times CLASSIC [1*]				
Max. programmable heating rate	K/min	30	30	30
shortest heating periode to 1.500°C at 230V	min	49	49	49
shortest cooling periode to 300°C	min	150	167	67
Process duration (incl. dwelling time 30 min)	min(h)	229(3,8)	246(4,1)	146(2,4)
Process times SPEED [1*]				
Max. programmable heating rate	K/min	X	99	99
shortest heating periode to 1.500°C at 230V	min	X	28	27
shortest cooling periode to 750°C	min	X	16	19
Process duration (incl. dwelling time 30 min)	min(h)	X	74(1,2)	76(1,3)
Programm control				
7-segment LED		X	X	X
4-lines LCD		✓	✓	✓
Number of process steps		4	4	4
Program numbers		30	30	30
	fixed programs	X	X	X
	Program numbers free	30	30	30
Special Programs				
drying		✓	✓	✓
heat-up ventilated		✓	✓	✓
Service Programs				
A-Temperature control [2*]		X	X	✓
C-Purge heating chamber		X	X	✓
E-Regenerate heating elements		X	X	✓
Thermocouple				
PtRh-Pt, type S		✓	✓	✓
Special functions				
Buffering of emergency-cooling battery		✓	✓	X
Port RS 232		✓	✓	✓
Door lift function		✓	✓	✓
Over-night programming		✓	✓	✓

Technical Data		HT 9600	HT SPEED 9601	HT-2/M/ZIRKON-120 9650
Power max.	W	3100	3800	3800
Voltage range / frequency	V/Hz	200-240 / 50-60	220-240 / 50-60	200-240 / 50-60
Weight	kg	78	78	74
Dimensions W/D/H	mm	500/560/810	500/560/810	500/560/820

[1*] Values of process: Sintering temperatur = 1500°C; holding time = 30min; 1 x sintering tray [2*] only in conjunction with test-kit

Scope of delivery



✓ standard
● optionally available
○ optionally available, but with reservations
✗ not compatible

Sintering tools		HT 9600	HT SPEED 9601	HT-2/M/ZIRKON-120 9650
96022	Sintered corundum AL, 4-6mm; 200g	●	●	●
96023	Sintering beads YTZ, 2.0mm; 200g	✓	✓	●
96024	Sintering beads YTZ, 1.25mm; 280g	●	●	●
95023	Sintering granulate YTZ, 200g	●	●	✓
7100001	Sintering tray, 100/30mm	X	X	○
95020	Sintering tray, 100/35mm; ventilated	X	X	○
95025	Sintering tray, lid 100/4mm	X	X	○
7100002	Sintering tray, 120/30mm	●	○	✓
96020	Sintering tray, 120/35mm; ventilated	✓	○	●
96025	Sintering tray, lid 120/4mm	✓	○	✓
7100003	Sintering tray, intermediate ring 120/35mm	●	○	✓
7100005	Sintering tray SPEED, 100/30mm	X	X	○
7100006	Sintering tray SPEED, 120/30mm	●	●	✓
95037	Sintering base plate SPEED, 100/15mm	X	X	○
95038	Sintering base plate SPEED, top ring 100/15mm	X	X	○
96037	Sintering base plate SPEED, 120/15mm	●	●	●
96038	Sintering base plate SPEED, top ring 120/15mm	●	●	●
95026	Sintering disc, 100/12mm	X	X	○
96026	Sintering disc, 120/12mm	●	○	●
Accessories				
96088	Crucible tongs, 100-120mm	✓	✓	✓
96030	Diamond whetstone, for sintering discs	✓	✓	✓
96041	Power cord EU, C19; 16A	✓	✓	✓
96042	Power cord USA, C19; 16A	●	●	●
7200003	Power cord GB, C19; 13A	●	●	●

**DURABLE.
RELIABLE.
ACCURATE.**

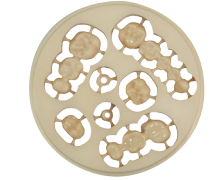
MIHM-VOGT GmbH & Co. KG
Dental-Gerätebau
Friedrich-List-Straße 8
76297 Stutensee-Blankenloch
Germany

Web www.mihm-vogt.de
Mail info@mihm-vogt.de
Phone +49 7244 70871-0
Fax +49 7244 70871-20

Status: April 2017
This document was made with maximum care.
Errors and omissions excepted.
Pictures and figures related.



HT



Valid from 01.04.2017

MADE IN GERMANY

