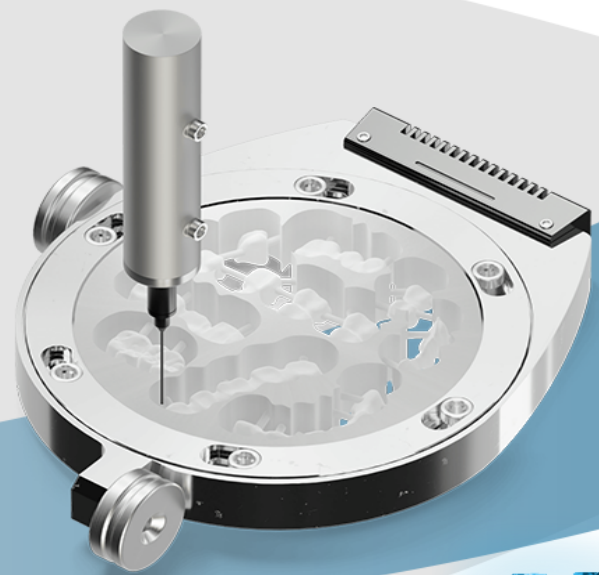


OQTON



POWERED by **AI**

Oqton is an automated CAM software and production platform for dental milling applications powered by artificial intelligence.

Oqton increases dental lab and milling center productivity and eliminates the bottlenecks in the milling workflow in a number of key ways:

- Unprecedented automation across the entire CAM workflow, including automatic stock selection, nesting and toolpath generation:
- Full traceability of process, parts and material stock
- Intelligence & experience programmed into the process

AUTOMATED CAM WORKFLOWS

Part orientation	○
Pin placement	○
Nesting	○
Toolpath generation	○
Machine learning	○
Physical simulation	○
Feature detection	○
Manage blank stock	○
Auto blank selection	○



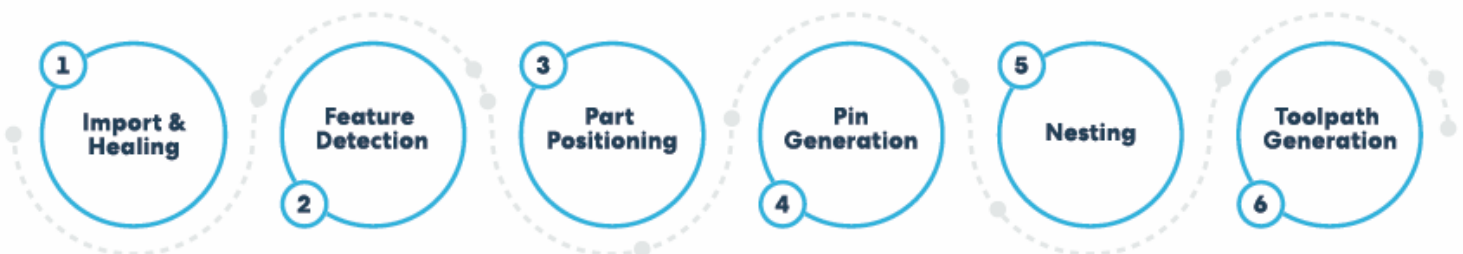
Oqton offers a highly automated —traceable— solution to many of the issues in the dental manufacturing workflow.

Materials						
ID	Material	Manufacturer	Location	Categories	Last Stock Ref. By	Last Modified
Zirconia Katana UTML (2)						
M-099-0039	Zirconia Katana UTML	Kuraray Noritake	Dental Demo	-	mr.dean@oqton.com	2021-05-28 15:15
M-099-0017	Zirconia Katana UTML	Kuraray Noritake	Dental Demo	-	mr.dean@oqton.com	2021-05-28 14:51
Zirconia Katana STML (2)						
M-099-0018	Zirconia Katana STML	Kuraray Noritake	Dental Demo	-	mr.dean@oqton.com	2021-05-30 15:09
M-099-0017	Zirconia Katana STML	Kuraray Noritake	Dental Demo	-	mr.dean@oqton.com	2021-05-28 15:12
Zirconia Vita YZ XT (1)						
M-099-0023	Zirconia Vita YZ XT	Vita	Dental Demo	-	mr.dean@oqton.com	2021-05-28 15:25
Zirconia Vita YZ ST (2)						
M-099-0033	Zirconia Vita YZ ST	Vita	Dental Demo	-	mr.dean@oqton.com	2021-05-28 15:15
M-099-0021	Zirconia Vita YZ ST	Vita	Dental Demo	-	mr.dean@oqton.com	2021-05-28 15:25

Built-in stock management to manage your physical stock of blanks

OQTON FOR DENTAL

Powered by Artificial Intelligence (AI) Oqton provides smart automation across the entire CNC milling workflow for all common dental indications, including crowns, bridges and abutments using a range of materials. Time and cost efficiencies are gained across the whole process chain, while ensuring full traceability.



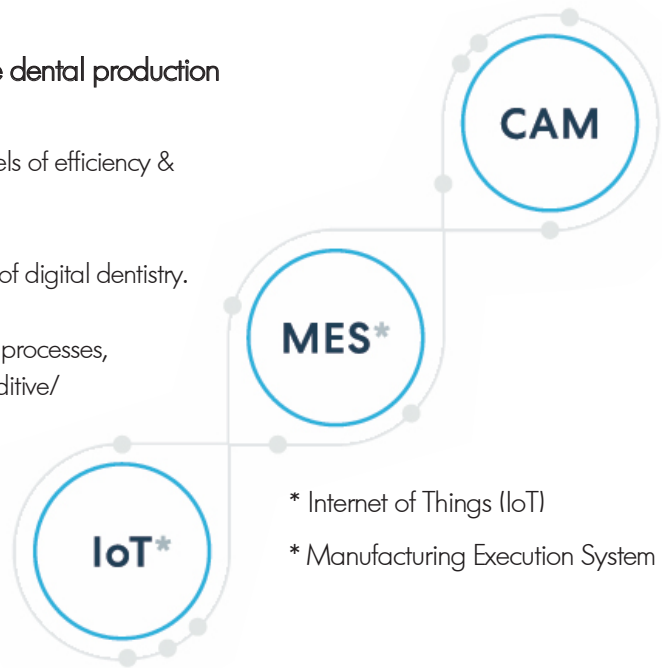
Oqton for dental is a complete solution for a fast and flexible dental production workflow.

Unparalleled automation enabled by AI to realise unprecedented levels of efficiency & productivity, bringing you the peace-of-mind you deserve.

A single integrated system that significantly increases the productivity of digital dentistry.

Oqton can connect and automate the workflow for all manufacturing processes, including CNC milling, metal and polymer 3D printing and hybrid additive/subtractive CAM workflows.

Schedule, track and trace all actions in your dental lab environment
Custom dashboards, reports and alerts accessible anywhere on any device.



* Internet of Things (IoT)

* Manufacturing Execution System (MES)

MAXIMUM PRODUCTIVITY

With parallel cloud computing Oqton can handle 100s of parts simultaneously, without delay. Fast calculation of toolpaths, irrespective of computer hardware.

Based on feature detection, milling templates are automatically assigned, thereby optimizing machining efficiency. Oqton automatically creates margin line for clean, high-quality part margins without chipping.



Action
A-002-3535
Action Model
Layered zirconia milling
Cell
CNC milling machine - 2
Material
M-000-0015
Operator
benoit.ssoete@oqton.com
Start Time
-
Duration
-



Nested Parts/Nests						
ID	Model	Rev.	Quantity	Completed	Order	Customer
P-001-3552	widbas.atl	1	0/1	(0 Rejected)	O-000-0718	Dental Lab 3D
P-001-3554	arfree.atl	1	0/1	(0 Rejected)	O-000-0718	Dental Lab 3D
P-001-3551	qfayw.atl	1	0/1	(0 Rejected)	O-000-0718	Dental Lab 3D
P-001-3553	idduvo.atl	1	0/1	(0 Rejected)	O-000-0718	Dental Lab 3D
P-001-3730	arfree.atl	2	0/1	(0 Rejected)	O-000-0718	Dental Lab 3D
P-001-3733	wdfzh.atl	2	0/1	(0 Rejected)	O-000-0718	Dental Lab 3D
P-001-3734	owwag.atl	2	0/1	(0 Rejected)	O-000-0718	Dental Lab 3D

Automatically created nest report

FULL TRACEABILITY

Oqton tracks all orders, stock material, and part history including revision history for easy compilation of Design History Files and Device History Records).

COMPLETE SOLUTION

- Presets for all dental applications
- Custom system configuration
- Online training and support
- Easily scalable (pay as you go subscription model)
- Easy deployment in the cloud, no installation
- Data Security (SOC2)

XXXXX

