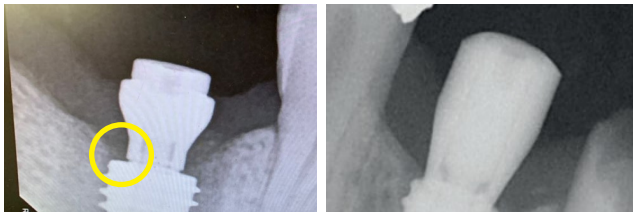


Intraoral Scanbody

A line

With the conventional intra-oral scanbody, it is difficult to validate whether the scanbody has been completely inserted into the implant fixture, which results in high chance of failure of the final prosthesis.

The "A" Line of the ARUM intra-oral scanbody provides an indicator to the operator to check for a complete connection to the implant fixture and thereby ensuring a more precise prosthesis.



[ARUM Intraoral Scanbody]

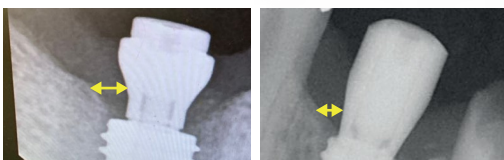
[Other Intraoral Scanbody]

Inner Thread

The Arum intraoral scanbody is specifically designed with an internal spiral thread, which prevents detachment and loss of screw once it is tightened and fully engaged to the implant fixture.

Concave Line

The lower body of the intra-oral scanbody is concave shaped. This minimizes pressure on the patient's gum during setting of the scanbody, thereby reducing experienced pain and securing a broader gingival area for future implant placement.



Holder


The holder allows the dentist to quickly and easily set the intra-oral scanbody into the implant fixture. This is especially effective for challenging cases such as the most distal molar.

Raw Material

Ti 6Al-4V ELI (ASTM F 136)

Supplied by Germany

- Easy to Sterilize

Intraoral Scanbody				Holder	
					
Ø 4.5 6mm	Ø 4.5 8mm	Ø 5.5 6mm	Ø 5.5 8mm	8mm	10mm

