



ax 726DW

Supercharge your lab or practice with the versatility of the new 7-Series Versamill AX726DW. This workhorse can mill virtually any dental material while providing the thinnest of margins—without chipping.

Assembled and rigorously tested in the state of Michigan. With domestic and foreign components, the AX726DW is an innovative machine concept that meets all the requirements of the modern, automated digital dental manufacturing process. Heavily-stabilized construction enables the processing of all dental materials in wet and dry machining. Ideal for extended operations with a fully-automatic 16-position tool changer, tool breakage sensor, and tool management system.



### FLEXIBILITY TO MEET THE DEMANDS OF TODAY AND TOMORROW

Process virtually all current and future dental materials, including: PMMA, Zirconia, PEEK, Pekkton, Composites Glass-Ceramic, Hybrid-Ceramic, Mill Abutments, Resins, Titanium, Cobalt-Chrome, and More.

Block sizes up to 40mm.

### INDICATIONS



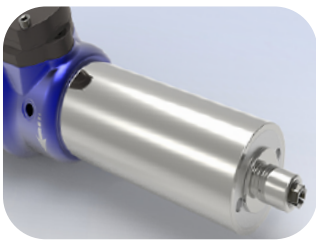
### AVAILABLE COLORS



Clinician Blue

Sage Wisdom

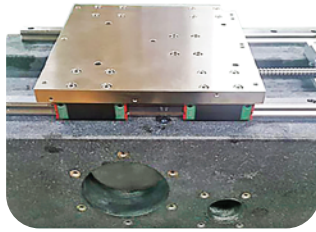
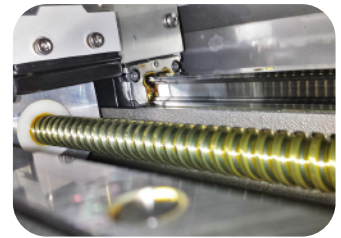
Charcoal



High-torque, 2.7kW max liquid-cooled spindle with 3 ceramic hybrid bearings that help to reduce margin thickness, and extend spindle life by reducing deflection and protecting against contamination by cutting chips and coolant.

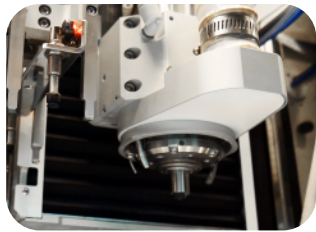


Superior dynamic motion and positional accuracy thanks to large-diameter precision ball screws, anti-backlash ball nuts and linear guides with closed loop servo drives.



Heavy, stable, granite frame with the lowest coefficient of linear expansion. Provides the rigidity and precision to enable the production of highest possible restoration precision.

Designed for higher production dental labs and milling centers, Series 7 machines are capable of machining hard metals such as, titanium and cobalt chrome as well as zirconia, and virtually any other dental material, including models.



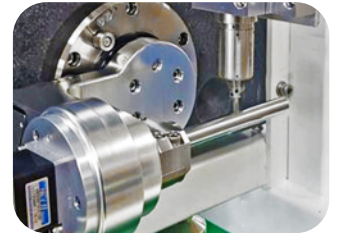
Powerful, high-torque, 2.7 kW 60,000 rpm spindle provides the ability to tackle the toughest machining challenges.

Couple class-leading rotary operating range of  $\pm 35^\circ$  and 94mm Z-axis stroke, with granite frame, and Axsys expert machining templates to produce restorations with undercuts, and clean, thin margins.



16-station ATC houses sturdy, flex-resisting 6mm diameter cutting tools with automatic tool management and breakage sensor.

Precise assembly and testing of perpendicularity of A-axis and B-axis-vital for accurate multi-axis manufacturing.



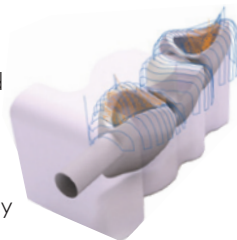
ax 726DW

All Versamill machines come with Axsys' award-winning support and unique software and machine enhancements not available from any other supplier. We leverage over 40 years of digital design and manufacturing experience—spanning a variety of industries—to provide additional functionality, unrivaled reliability and increased productivity.

### CAM SOFTWARE: PROVEN & FULL-FEATURED

The Versamill AX726DW is powered by your choice of GO2cam or hyperDENT CAM software from FOLLOW-ME! Technology Group.

These software products incorporate efficient, proven milling cycles to provide maximum process stability and indication quality, including patent-protected milling strategies used for complex materials that, coupled with our expert, high efficiency machining templates, ensure perfect surface quality while minimizing cycle time and maximizing tool life.



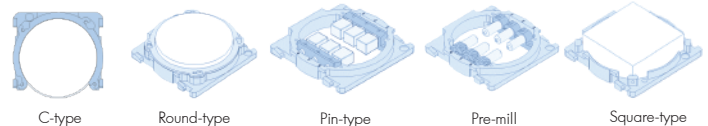
**hyperDENT** **GO2cam**

#### OPTIONAL MODULES

Full Denture, Hybrid, Implant, Template Generator

Multi Import & Nesting, Implant Bar/Bridge, Expert, Expanded Import

### FIXTURES



#### Versamill AX726DW Specifications

|                           |                     |                       |
|---------------------------|---------------------|-----------------------|
| Number of axes:           |                     | 5 simultaneous        |
| Travel (x, y, z axis):    | (mm)                | 330 x 146 x 145       |
| B Rotational axis:        | (degrees)           | $\pm 35^\circ$        |
| Processing:               |                     | Wet/Dry               |
| Drive Mechanism:          |                     | Ballscrew             |
| Way System:               |                     | Linear Guide          |
| Air Requirement:          | (bar)               | 6.5 bar               |
| Spindle Power:            | (watts)             | AC 2.7kW max          |
| Spindle Speed:            | (rpm)               | 6,000 - 60,000        |
| ATC number of tools:      | 6.0mm $\varnothing$ | 16                    |
| Axis Drive System         |                     | Servo Motor w/Encoder |
| Blank disc diameter:      | (mm)                | 98 $\varnothing$      |
| Machine size (W x H x D): | (mm)                | 870 x 1520 x 800      |
| Weight:                   | (Kg)                | 260Kg                 |
| Input Power               | (VAC/50-60Hz)       | 220 /6A Single Phase  |