



ax 726DW|PRO

## Supercharge your lab or practice with the new 7-Series Versamill AX726DW-PRO – the ultimate in reliable 24-Hour productivity.

Assembled and rigorously tested in the State of Michigan consisting of domestic and foreign components, the AX726DW-PRO is an innovative machine concept that meets all the requirements of the modern, automated digital dental manufacturing process. The extremely stable construction enables the processing of all dental materials in wet and dry machining. With a fully-automatic robotic 18-position blank changer, the system enables versatile machining in 24-hour operation without the problems associated with traditional disc changer systems. 7-Series precision reduces the need for production-robbing machine calibration, while the auto-calibration feature simplifies the process and reduces the time required.



### FLEXIBILITY TO MEET THE DEMANDS OF TODAY AND TOMORROW

Process virtually all current and future dental materials, including: PMMA, Zirconia, PEEK, Pekkton, Composites Glass-Ceramic, Hybrid-Ceramic, Sintered Metal, Ti & CoCr PreMill Abutments, Resins, Titanium, Cobalt-Chrome, and More.

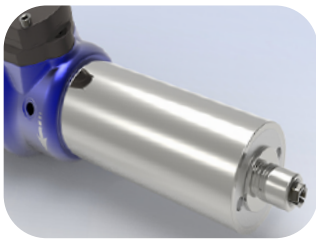
Block thickness up to 40mm.

### INDICATIONS



### AVAILABLE COLORS

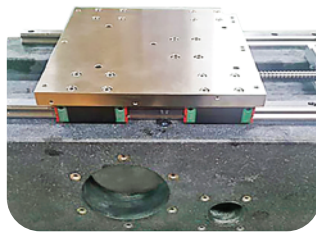
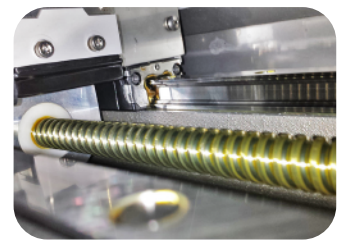




High-torque, 2.7kW max liquid-cooled spindle with 3 ceramic hybrid bearings that help to reduce margin thickness, and extend spindle life by reducing deflection and protecting against contamination by cutting chips and coolant.

## ax 726DW|PRO

Superior dynamic motion and positional accuracy thanks to large-diameter precision ball screws, anti-backlash ball nuts and linear guides with closed loop servo drives.



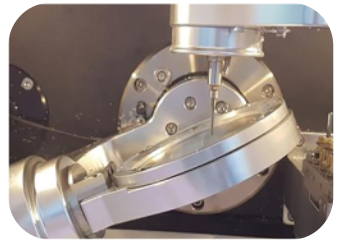
Heavy, stable, granite frame with the lowest coefficient of linear expansion. Provides the rigidity and precision to enable the production of highest possible restoration precision.

Designed for higher production dental labs and milling centers, Series 7 machines are capable of machining hard metals such as, titanium and cobalt chrome as well as zirconia, and virtually any other dental material, including models.



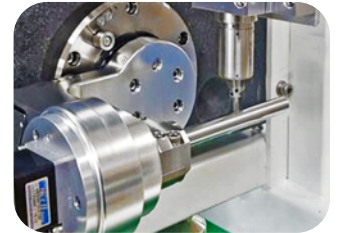
Maximize productivity by overnight and week end operation with class leading 18-position robotic auto loader.

Couple class-leading rotary operating range of  $\pm 35^\circ$  and 94mm Z-axis stroke, with granite frame, and Axsys expert machining templates to produce restorations with undercuts, and clean, thin margins.



16-station ATC houses sturdy, flex-resisting 6mm diameter cutting tools with automatic tool management and breakage sensor.

Precise assembly and testing of perpendicularity of A-axis and B-axis-vital for accurate multi-axis manufacturing.

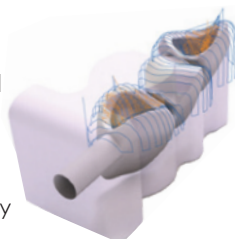


All Versamill machines come with Axsys' award-winning support and unique software and machine enhancements not available from any other supplier. We leverage over 40 years of digital design and manufacturing experience--spanning a variety of industries--to provide additional functionality, unrivaled reliability and increased productivity.

### CAM SOFTWARE: PROVEN & FULL-FEATURED

The Versamill AX726DW-PRO is powered by your choice of GO2cam or hyperDENT CAM software from FOLLOW-ME! Technology Group.

These software products incorporate efficient, proven milling cycles to provide maximum process stability and indication quality, including patent-protected milling strategies used for complex materials that, coupled with our expert, high efficiency machining templates, ensure perfect surface quality while minimizing cycle time and maximizing tool life.

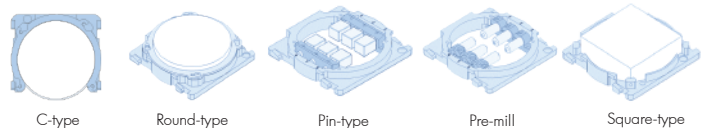


#### OPTIONAL MODULES

Full Denture, Hybrid, Implant, Template Generator

Multi Import & Nesting, Implant Bar/Bridge, Expert, Expanded Import

### FIXTURES



#### Versamill AX726DW-PRO Specifications

Number of axes:		5 simultaneous
Travel (x, y, z axis):	(mm)	330 x 146 x 145
B Rotational axis:	(degrees)	$\pm 35^\circ$
Processing:		Wet/Dry
Drive Mechanism:		Ballscrew
Way System:		Linear Guide
Air Requirement:	(bar)	6.5 bar
Spindle Power:	(watts)	AC 2.7KW max
Spindle Speed:	(rpm)	6,000 - 60,000
ATC number of tools:	6.0mm $\varnothing$	16
Axis Drive System		Servo Motor w/Encoder
Blank disc diameter:	(mm)	98 $\varnothing$
Machine size (W x H x D):	(mm)	870 x 1520 x 800
Weight:	(Kg)	260Kg
Input Power	(VAC/50-60Hz)	220 /6A Single Phase